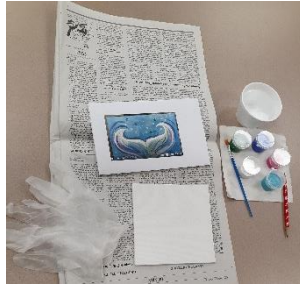


Paint a Tail Painting Tutorial

Materials (Included)

Acrylic Paint
Brush
Canvas
Template



Optional:

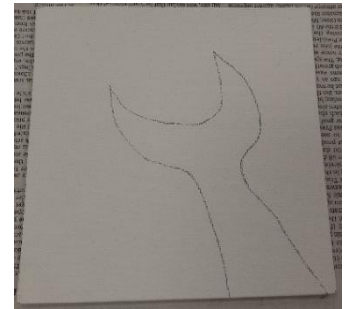
Pencil
Extra brushes
Chalk
Graphite Paper
Gold or Silver Paint Pen
Disposable Gloves

Video Tutorial at smcpl.org/paint

<https://youtu.be/CNTIIZVtUE0>

Directions

Draw the Mermaid Tail shape with a pencil
Use a pencil to draw or trace the mermaid tail.



Paint The Background



Use the flat side of the brush and “X” shape and swirl techniques to paint the background. Triple load the brush with up to three colors. Paint in textured angle strokes blending the colors on the canvas. Try not to over blend the colors to the point where they all turn the same solid color. Try to create some variations in the background where some areas are lighter, some darker.

Paint the tail

Load your brush with one color and a little bit of white. Paint the tail stroking downwards blending the color with the white. Blend in more white in the center so there is more white in the center of the tail. Add more of the color on the left and right of the tail so it is slightly darker on those sides. Or do the opposite and have more white on the edges of the tail.



Paint the fin



Start with more white and a little bit of another color so that the top part of the fin is lighter. Then blend more of the colors into the middle part of the fin. Paint in curved, contouring strokes. This is a very “flowing” part of the tail so make sure your strokes are “curved”. Try to get the top part of the fin to be lighter and have it blend to a darker bottom part of the tail. Make sure you also define the shape of the fin.

This project is funded in part by local donations, and a federal Institute of Museum and Library Services and Technical Act (LSTA) grant awarded by the State Library of Ohio.

Then rinse brush and load it into just white. Paint white curved lines on the tail to create some of the fin texture. Start in the center under the curved top of the fin and paint a flowing white line to the bottom edge of the fin. Do several of these fin lines on each side.

Paint Splashes/ Tail Sparkles/ Bubbles

Paint various sized dots on the tail.

Paint these dots in clusters and make some that are tiny and some that are slightly bigger. This adds to the “sparkle effect” on the tail.

Then use the plastic end of the brush to dot small white circles all throughout the painting.

Optional: Use a toothbrush to splatter some small dots under the tail. Load a small amount of slightly watered down white on the brush and flick it with your finger to create the splatters. Again You can do this all throughout the canvas.



Finished

That’s it! Sign your name and show it off!

Take a photo of your completed artwork to share with the library and the community.

Share your photo by tagging the library on Facebook, Instagram, or YouTube.

<https://www.facebook.com/smcp/>

<https://www.instagram.com/smcp/library/>

#smcp/library

#paintatailortale

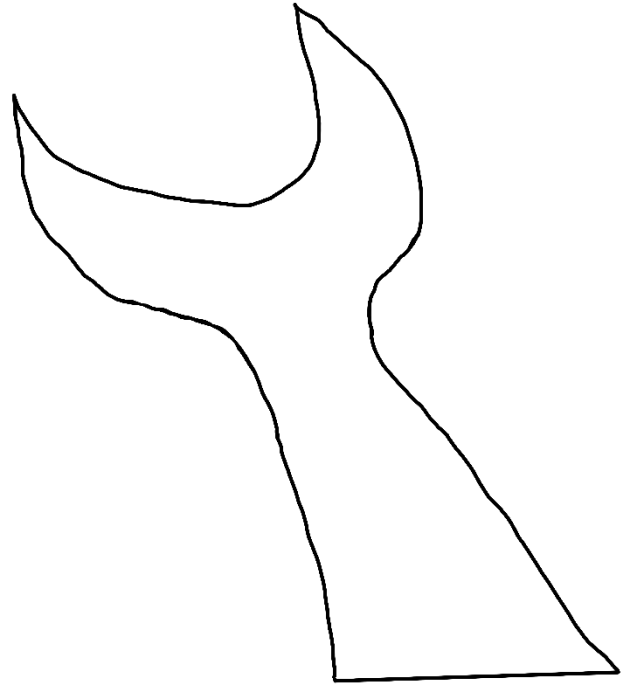
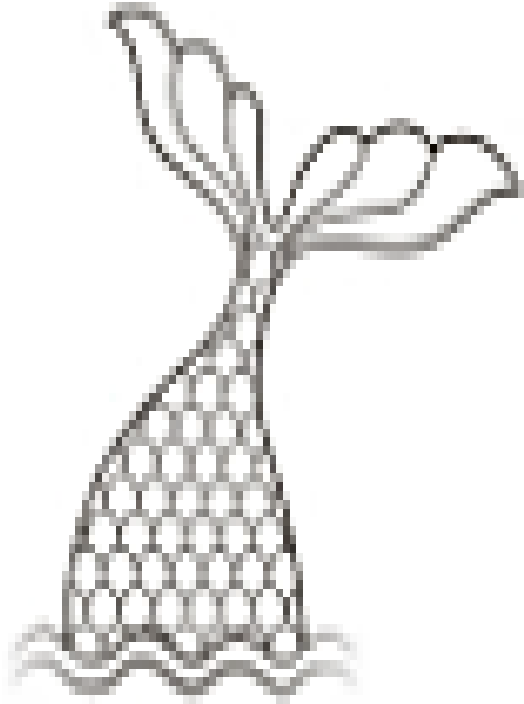
https://www.youtube.com/channel/UCO61b0pSTJi9NJ7Qv-sTV_Q

You can also e-mail a picture to: stmaryshelp@seolibraries.org

Add the **SUBJECT:** Paint a Tail or Tale

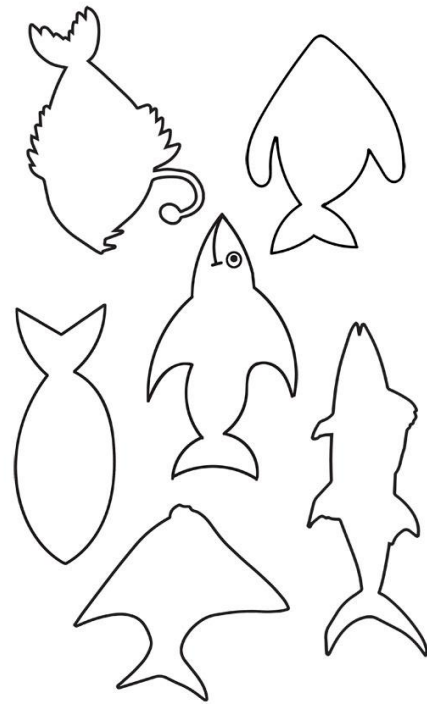
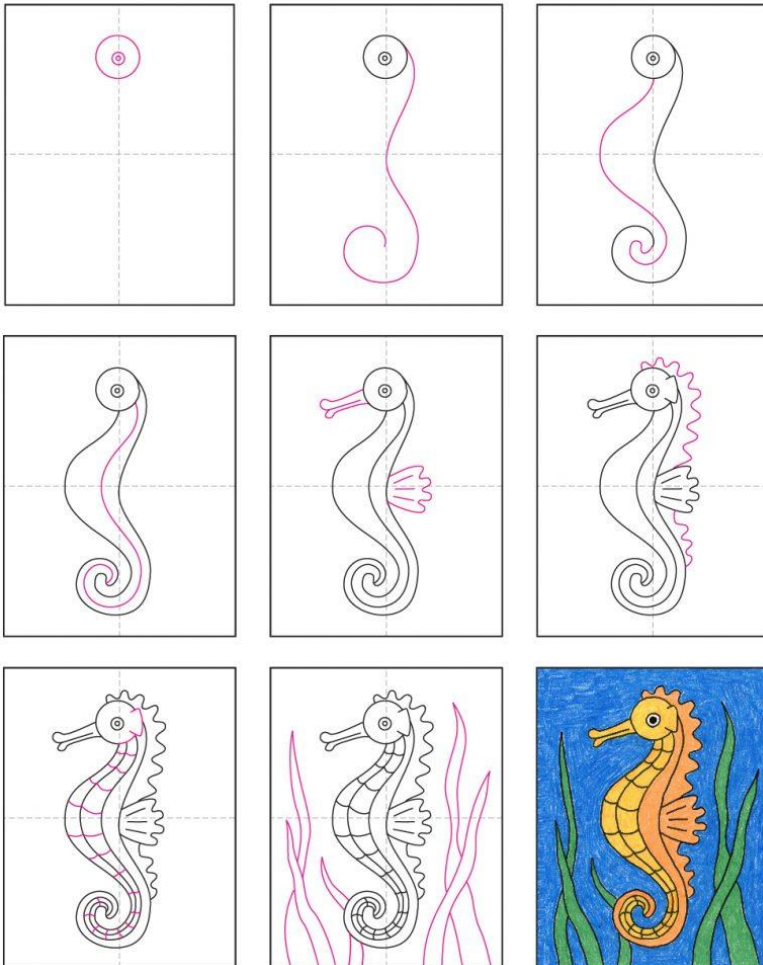


Draw or cut out and trace these shapes



Draw a seahorse and seaweed

Fish shapes



Advanced Example Tips

Paint in some seaweed

Load your palette with green and white.

Use the brush to paint the seaweed. Alter the thickness of the stroke of the seaweed so it gets wider and then thinner. Change the amount of green and white you load on the brush so it varies.

Paint several types of seaweed. Some can be vertical and wavy. Some can have leaves on the sides of the lines. Some can have small rounded leaves.

You can also do strings of small white dots on the bottom around the seaweed.



Draw and paint base for the seahorse & fish

Next draw the seahorse with a pencil (or use the traceable template that has the seahorse on it). You can see a great tutorial for how to draw this kind of seahorse here.

Then I highly recommend you paint the seahorse titanium white so the color of the seahorse will stand out better against the dark background (it gives it better coverage).

Then paint a fish white (or draw it in and paint it).

Draw the scales with gold or silver paint or a paint pen

Used gold, silver or black paint or a paint pen to draw the mermaid scales.

Draw the upside down half circle shapes in a row. And then stagger them in the next row like bricks. Continue to draw the scales working your way down to the bottom of the mermaid fin.

Paint sparkles on the tail and in the background water

Then do more clusters of white dots all throughout the tail the same way you did them on the bottom fin piece.

Vary the dots so some appear larger, some smaller.

Paint seahorse & fish

If the seahorse base coat is dry, paint it with phthalo blue (or another color choice if you wish).

Paint the left part of the seahorse, the head, tail and mouth with the phthalo blue. Then mix a little white into the phthalo blue so it becomes lighter. Paint the side fin and the belly with that lighter blue.

Then paint the points on the back with that lighter blue.

Paint the eye white.

Then paint blue lines on the bellow of the seahorse. Paint the fish.

Paint Some Scales On Mermaid Tail

Next paint some of the scales on the mermaid tail. I wouldn't recommend painting all the scales but it does give it a pretty effect when various shades of blues and purple used on your palette are used to paint some of the tails in clusters.

On your palette mix variations of blue with white and purple and aqua. Have fun making and mixing different unique colors. Then use the brush to paint those unique colors on the shape of the scales.

Paint them in clusters. Some areas have three scales painted together, some two and some four.

You might try to paint something different.

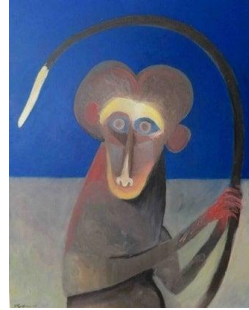
Some Examples:



Whale



Pig



Monkey



Trout

Advanced Techniques

Maybe paint a fairy tale scene



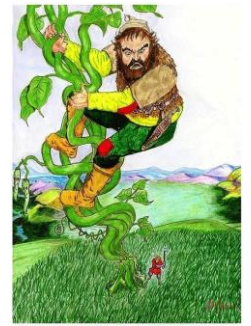
Mermaid Tail



Pig Tail



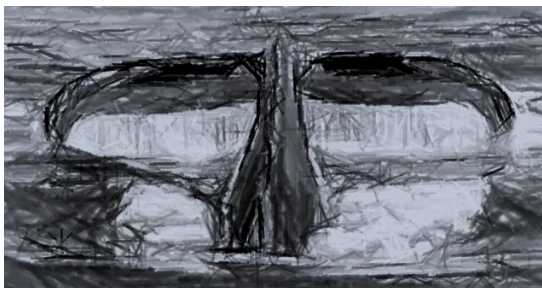
Goldilocks and the Three Bears



Jack and the Beanstalk

Would you like to make a monochrome painting?

Examples



Grayscale
(Black and White)



Yellow
(Yellow, Black and White)



Blue
(Blue, Black and White)

Other Technique Examples



Shapes



Rain Drops



Dots



Gond (Folk and Tribal)



Perspective



Three-Dimensional

Resources:

Find some books on painting to borrow from the library. **Ask a Librarian** if you need help.

catalog.smcpl.org

Use your library card to access:

Hobbies and Crafts Reference Center

<https://www.ohioweblibrary.org/sources/>

Find "how-to" instructions and creative ideas to meet the interests of virtually every hobby enthusiast.



Craftsy on Hoopla <https://www.hoopladigital.com/>

<https://stepbystepainting.net/2021/05/12/mermaid-tail-painting-tutorial/>

"Customize the colors in this painting and add some custom sea creatures!

You can do the seahorse in a brighter, warm color and add a starfish for a more bright, cheery color palette!"

How to draw a seahorse: <https://artprojectsforkids.org/draw-a-seahorse/>